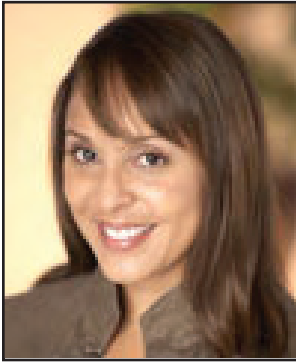


Adelphi University Celebrates National Poetry Month Thursday, April 10, 2008

School Registration Form Deadline: Friday, March 14, 2008



Natasha Trethewey, Pulitzer Prize-Winning Poet

“Trethewey is clearly a poet to savor.” —Maxine Kumin

Natasha Trethewey is author of *Native Guard*, for which she won the 2007 Pulitzer Prize; *Bellocq's Ophelia*, which was named a Notable Book for 2003 by the American Library Association; and *Domestic Work*.

She is the recipient of fellowships from the Guggenheim Foundation, the Rockefeller Foundation Bellagio Study Center, the National Endowment for the Arts, and the Bunting Fellowship Program of the Radcliffe Institute for Advanced Study at Harvard.

Her poems have appeared in such journals and anthologies as *American Poetry Review*, *Callaloo*, *Kenyon Review*, *The Southern Review*, *New England Review*, *Gettysburg Review*, and *The Best American Poetry 2000* and *2003*. Currently, she is Phillis Wheatley Distinguished Chair in Poetry at Emory University.

Schedule

8:15 a.m.–9:00 a.m.	Registration
9:00 a.m.–9:05 a.m.	Welcoming Remarks
9:10 a.m.–10:10 a.m.	Workshop I
10:15 a.m.–11:15 a.m.	Workshop II
11:15 a.m.–12:10 p.m.	Lunch
12:10 p.m.–12:55 p.m.	Keynote Address, Natasha Trethewey
12:55 p.m.–1:30 p.m.	High School Students Poetry Reading

NOTE: We invite you to bring up to ten students (maximum three seniors) from your school. Reservations will be held on a first-come, first-served basis. Lunch will be provided, and there is no charge for participation. To participate in the Poetry Festival, please send completed School Registration Form, Student Registration Forms, and manuscripts (if submitting work to the Poetry Contest) to: **Alexis Gabriel; Adelphi University; University Promotion and Outreach; One South Avenue; P.O. Box 701; Garden City, NY 11530-0701; or fax (516) 877-3463. If you fax these registration materials, please be sure to mail the originals.** Registration deadline is Friday, March 14, 2008. See Student Registration Form for complete list of Poetry Contest rules and regulations.